

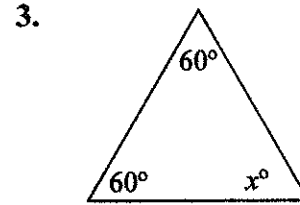
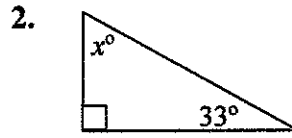
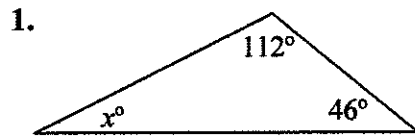
Lesson 8 ~ Angle Sum of a Triangle

Name _____

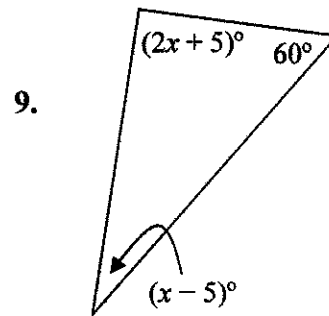
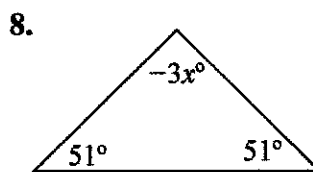
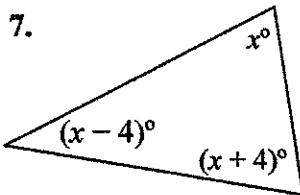
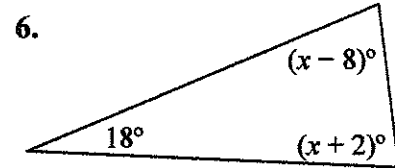
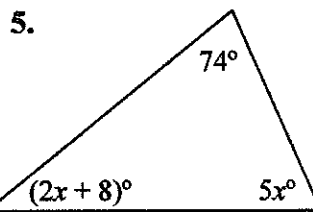
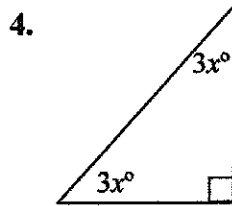
Period _____

Date _____

Find the degree of each missing angle.



Set up an equation and solve for x .



10. In $\triangle MRS$, the measure of $\angle M$ is 110° . The measure of $\angle R$ is $(3x - 8)^\circ$ and measure of $\angle S$ is $(3x + 6)^\circ$.

a. Set up an equation and solve for x .

b. Find $m\angle R$ and $m\angle S$.

11. Chelsea determined that the value of x in the triangle at the right was 5.

a. Find the value of each angle by substituting 5 for x .

b. Was Chelsea's solution of $x = 5$ correct? How do you know?

